

## Removal

Spray all nuts to be removed generously with your favorite rust buster.

**Note:** When disassembling, note the quantity and positions of any shims that may have been inserted for body alignment. These shims will have to be reused to insure proper body alignment.

**Remember:** Only raise body high enough to remove & replace mounts. Always watch the fan shroud for sufficient clearance when raising the body. When jacking the body use a long enough 2X4 or 4X4 for maximum support. Never put jack directly on body panels.

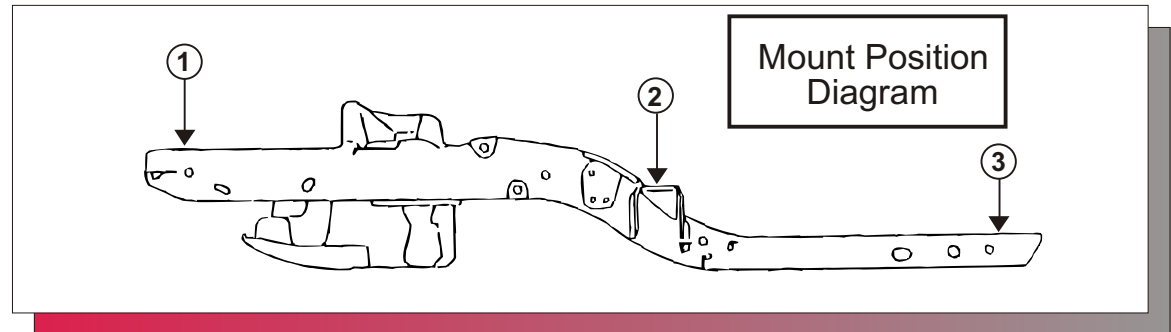
Install mounts one side at a time with bolts on other side loosened only.

Retorque to factory specs.

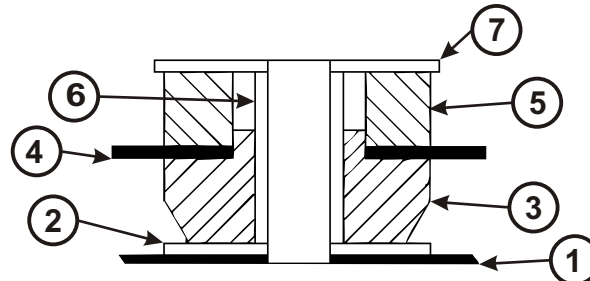
Set # 3.4129

**ENERGY**  
**SUSPENSION**®

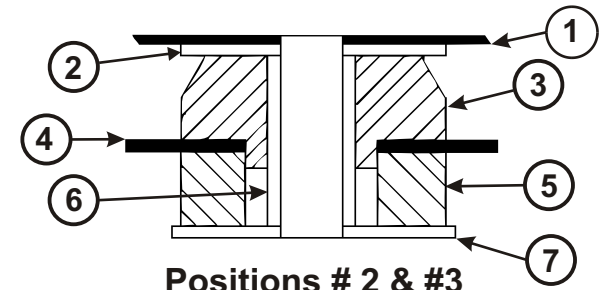
1131 VIA CALLEJON, SAN CLEMENTE, CA 92673



Parts Diagram  
(refer below)



Position # 1



Positions # 2 & # 3

Must re-use original hardware

©2008 Energy Suspension. All rights reserved.  
May not be reproduced, in any form, or by any means,  
without the written consent of Energy Suspension.

### POSITION # 1

1. Frame
2. Supplied washer 2-1/2" x 1/2"
3. 4084
4. Radiator support
5. 4090
6. Supplied sleeve 1-1/2" Long
7. Supplied washer 2-1/2" x 1/2"

### POSITION # 2

1. Body
2. Supplied washer 2-1/2" x 5/8"
3. 4088
4. Frame
5. 4091
6. Supplied sleeve 1-1/2" Long
7. Supplied washer 2-1/2" x 5/8"

### POSITION # 3

1. Body
2. Supplied washer 2-1/2" x 5/8"
3. 4089
4. Frame
5. 4091
6. Supplied sleeve 1-1/4" Long
7. Supplied washer 2-1/2" x 5/8"