

INSTRUCTION SHEET FOR SET #35.7002

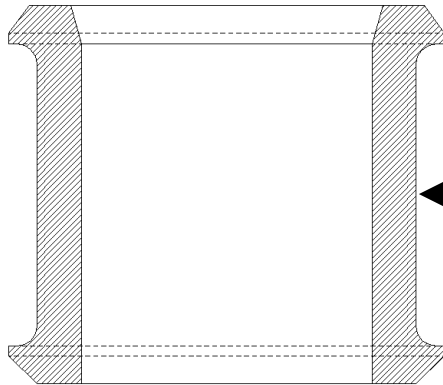
Radius Rod Bushing Set



1131 VIA CALLEJON, SAN CLEMENTE, CA 92673

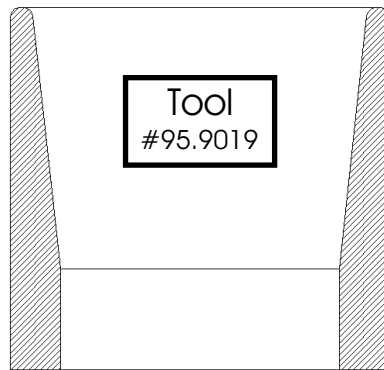
© 2005 Energy Suspension. All rights reserved.
May not be reproduced, in any form, or by any means,
without the written consent of Energy Suspension.

Use flate plate on this end large enough for full coverage, but small enough to go through tool I.D.



Apply a coat of grease to this surface

Install with machined end down



Center on radius rod eye when installing bushing.

Remove old bushing assembly with outer metal shell. Make sure there are no sharp edges on radius rod eyes before installing the new polyurethane bushing. Apply a coat of grease to radius rod eye. Apply a light coat of grease to the O.D. of the new bushing. Then install bushing in radius rod eye. Apply a coat of grease to the sleeve O.D. and bushing I.D. then press into new bushing from I.D. chamfered end.

(Basic rule: Apply a coat of grease to all bushing surfaces that contact metal)

When it becomes necessary to remove radius rod arms for service of axles or other related components, the I.D. of sleeve may stay on the mounting pin. To remove the sleeve from the pin, insert a flat screwdriver blade into slot and twist slightly to expand sleeve I.D., Pulling sleeve off at the same time. Press the sleeve back into the bushing I.D. reinstall on chassis.

Note: The radius rod with the new polyurethane bushings are installed into mounting position the same as a rubber part. It is necessary to tap or drive on to mounting pins.

Torque mounting bolts to factory specifications and recheck torque at factory recommended intervals.

**Bushings can also be installed using an expandable ring compressor*