

Set # 3-4145

We recommended, if you are unfamiliar with this type of work, that you refer to a qualified service center specializing in this type of work. It is also recommended, if you choose to do this work yourself, that a factory service manual be obtained for the proper procedures pertaining to removal, replacement and proper torque specifications for your vehicle. This instruction set is intended as a guideline for the safe installation of Energy Suspension's polyurethane bushings, once you have removed the factory components from your vehicle.

Removal

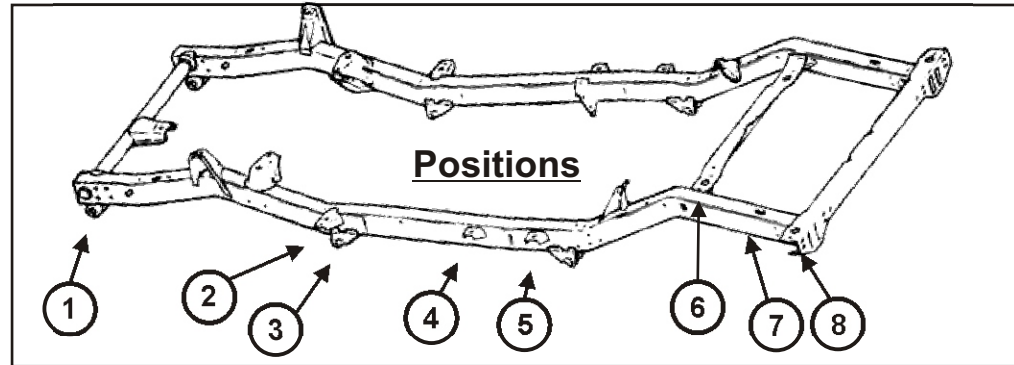
Spray all nuts to be removed generously with your favorite rust buster.

Note: When disassembling, note the quantity and positions of any shims that may have been inserted for body alignment. These shims will have to be reused to insure proper body alignment.

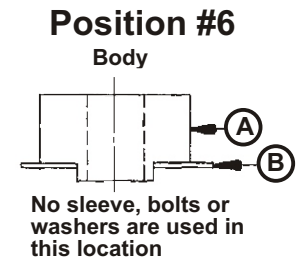
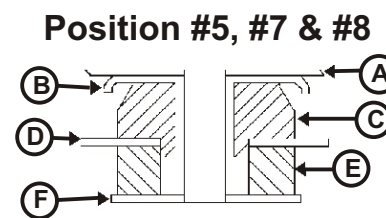
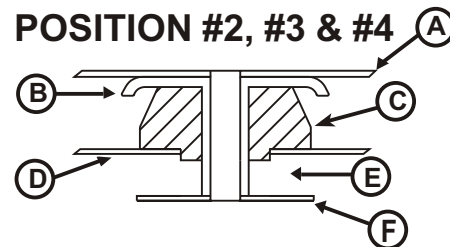
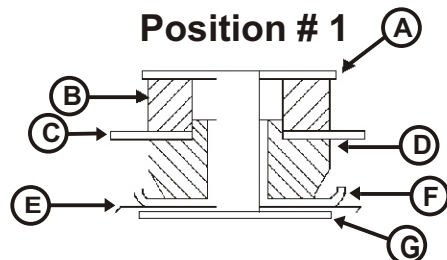
Remember: Only raise body high enough to remove & replace mounts. Always watch the fan shroud for sufficient clearance when raising the body. When jacking the body use a long enough 2X4 or 4X4 for maximum support. Never put jack directly on body panels.

Install mounts one side at a time with bolts on other side loosened only.

Retorque to factory specs.



01/MAY/08 NK
17237



POSITION # 1

- A. Factory washer
- B. 4116
- C. Core support bracket
- D. 4115
- E. Factory washer w/sleeve
- F. Frame
- G. Factory shims

POSITION #2 and #4

- A. Body
- B. Factory washer w/sleeve
- C. 4113
- D. Frame
- E. No bushing
- F. Factory washer

POSITION #3

- A. Body
- B. Factory washer w/sleeve
- C. 4141
- D. Frame
- E. No bushing
- F. Factory washer

POSITION #5 & #7

- A. Body
- B. Factory washer w/sleeve
- C. 4113
- D. Frame
- E. 4114
- F. Supplied washer (2"O.D. x 1/2" I.D.)

POSITION #6

- A. 4140
- B. Frame

POSITION #8

- A. Body
- B. Factory washer w/sleeve
- C. 4141
- D. Frame
- E. 4142
- F. Supplied washer (2"O.D. x 1/2" I.D.)