

Installation Instructions

For set # 15.3119

93-99 VW Cabrio/Golf/GTI/Jetta,
99-02 VW Cabrio, 90-95 VW Corrado 6 Cyl
Rear Axle Beam Bushings



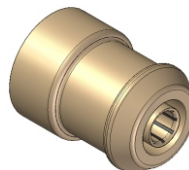
1131 VIA CALLEJON, SAN CLEMENTE, CA 92673

© 2011 Energy Suspension. All rights reserved.
May not be reproduced, in any form, or by any means,
without the written consent of Energy Suspension.

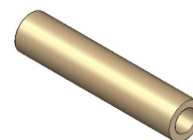
It is recommended that if you are unfamiliar with this type of work that you refer to a qualified service center specializing in this type of work. It is also recommended that if you choose to do this work yourself that a factory service manual be obtained for the proper procedures pertaining to removal, replacement and proper torque specifications for your vehicle. This instruction sheet is intended as a guideline for the safe installation of Energy Suspension's polyurethane bushings, once you have removed the factory suspension components from your vehicle. Wheel alignment is almost always disturbed when suspension components are removed or replaced. It is recommended that you have the alignment checked on your vehicle at a qualified alignment shop.

Parts list:

- 2 ea 3503 (Rear Axle Beam Bushing)
- 2 ea 15.10.350.39 (.750 OD x .450 ID x 3.540 L Sleeve)
- 1 ea 9.11101 (Formula 5 PreLube)
- 1 ea 17569 (Instructions)



3503



15.10.350.39



Refer to the shop manual for the safe removal of axle, brake line bleeding, torque specs and alignment of your vehicle.



Securely hold the axle beam in a vice and use a bushing driver to drive out the O.E. Bushing. The I.D. Of the axle beam is Ø2.205"



Ensure that the metal shell has been removed. Your O.E. Bushing should look similar.



Apply grease to all metal parts that will contact the polyurethane bushings.

Press in the new bushings, grease and install the sleeves, reinstall suspension, tighten all nuts/bolts to factory specifications and bleed the brakes if brake lines were disconnected. Check alignment.

17569

4/APR/11 MAM