

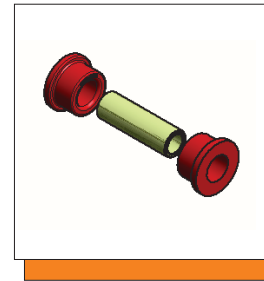
17P17744
11/MAY/22
JGB

Bushing Installation Instructions

© 2022 Energy Suspension. All rights reserved.
May not be reproduced, in any form, or by any means,
without the written consent of Energy Suspension.



1131 VIA CALLEJON, SAN CLEMENTE, CA 92673



Note: Remove old bushings, clean ID of the control arm eyes. Apply a light coat of "Formula 5" grease to I.D, O.D. and Flange of the bushing. Apply a light coat of grease to the OD of the sleeve. Reassemble the bolt and torque to factory specs.

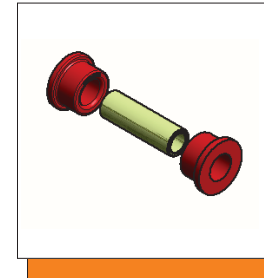
17P17744
11/MAY/22
JGB

Bushing Installation Instructions

© 2022 Energy Suspension. All rights reserved.
May not be reproduced, in any form, or by any means,
without the written consent of Energy Suspension.



1131 VIA CALLEJON, SAN CLEMENTE, CA 92673



Note: Remove old bushings, clean ID of the control arm eyes. Apply a light coat of "Formula 5" grease to I.D, O.D. and Flange of the bushing. Apply a light coat of grease to the OD of the sleeve. Reassemble the bolt and torque to factory specs.

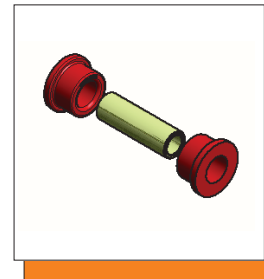
17P17744
11/MAY/22
JGB

Bushing Installation Instructions

© 2022 Energy Suspension. All rights reserved.
May not be reproduced, in any form, or by any means,
without the written consent of Energy Suspension.



1131 VIA CALLEJON, SAN CLEMENTE, CA 92673



Note: Remove old bushings, clean ID of the control arm eyes. Apply a light coat of "Formula 5" grease to I.D, O.D. and Flange of the bushing. Apply a light coat of grease to the OD of the sleeve. Reassemble the bolt and torque to factory specs.

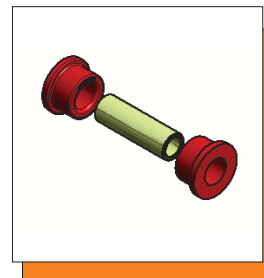
17P17744
11/MAY/22
JGB

Bushing Installation Instructions

© 2022 Energy Suspension. All rights reserved.
May not be reproduced, in any form, or by any means,
without the written consent of Energy Suspension.



1131 VIA CALLEJON, SAN CLEMENTE, CA 92673



Note: Remove old bushings, clean ID of the control arm eyes. Apply a light coat of "Formula 5" grease to I.D, O.D. and Flange of the bushing. Apply a light coat of grease to the OD of the sleeve. Reassemble the bolt and torque to factory specs.