

# Installation instructions

## For set # 3.4118

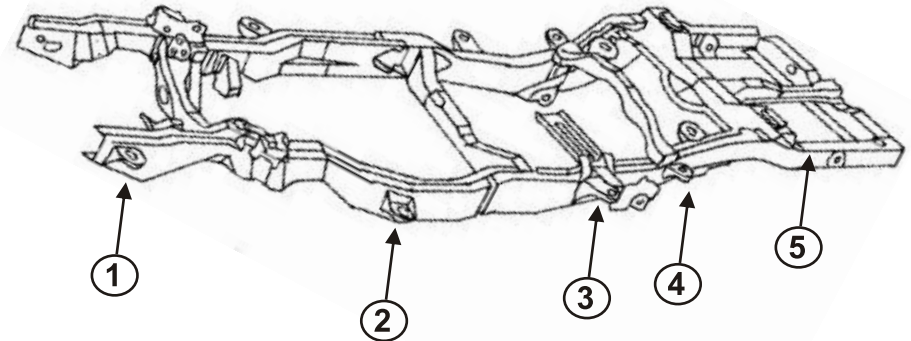
It is recommended that if you are unfamiliar with this type of work that you refer to a qualified service center specializing in this type of work. It is also recommended that if you choose to do this work yourself that a factory service manual be obtained for the proper procedures pertaining to removal, replacement and proper torque specifications for your vehicle. This instruction set is intended as a guideline for the safe installation of Energy Suspension's polyurethane bushings, once you have removed the factory components from your vehicle.

© 2007 Energy Suspension. All rights reserved.  
May not be reproduced, in any form, or by any means, without the written consent of Energy Suspension.

**Step 1:** Loosen all 10 body mount positions but do not remove the nuts and bolts entirely. Remove the nuts and bolts from the 5 positions on one side and leave the other side loose.

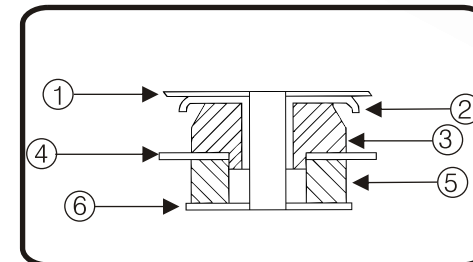
**Step 2:** Use a jack and wood block to lift the body high enough off the frame to remove the original mounts.

**CAUTION:** Watch the fan shroud and electrical wiring for sufficient clearance when raising the body.



### NOTES

- 1) Be sure on disassembly to note all quantity and positions of any shims that may have been inserted for body alignment. These shims will have to be re-used to insure proper body alignment.
- 2) The factory bracket used at position #5 to hold the lower cushion in place must not be re-used. Supplied nuts are for rear bumper bolts.
- 3) Install mounts one side at a time with the bolts on the opposite side loosened only



#### POSITION # 1 - 2 - 3

1. BODY
2. FACTORY SLEEVE
3. 4067
4. FRAME
5. 4068
6. FACTORY WASHER

#### POSITION # 4

1. BODY
2. SUPPLIED 2 1/2" WASHER AND 1 5/8" SLEEVE
3. 4092
4. FRAME
5. 4037
6. SUPPLIED 2 1/2" WASHER

#### POSITION # 5

1. BODY
2. SUPPLIED 3" WASHER & 1.900" SLEEVE
3. 4010
4. FRAME
5. 4037
6. SUPPLIED 2 1/2" WASHER

MUST RE-USE ORIGINAL HARDWARE (WHEN SPECIFIED)

TORQUE TO FACTORY SPECS