

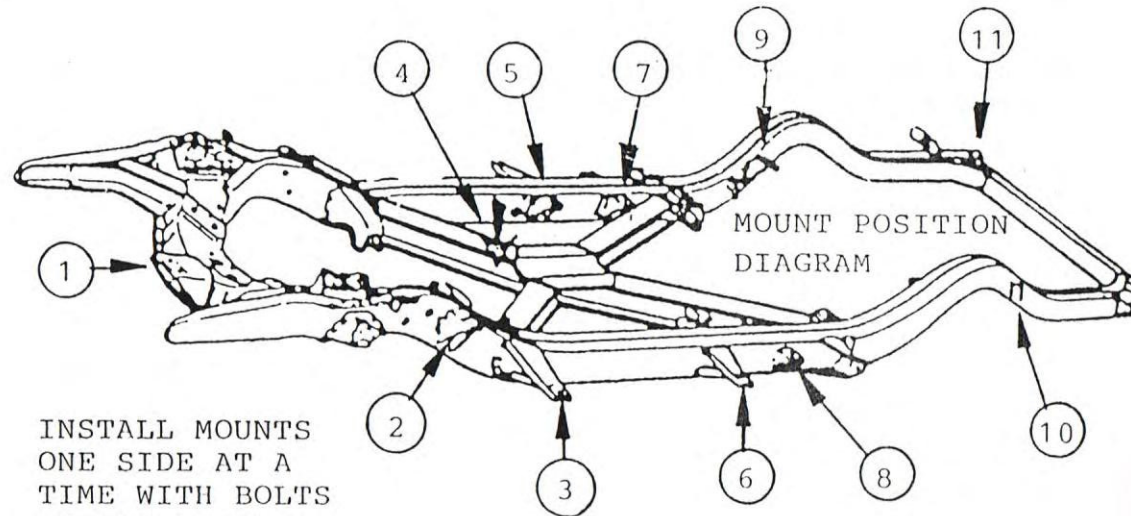
REMOVAL

SET #3.4119

\*SPRAY GENEROUSLY ALL NUTS TO BE REMOVED WITH YOUR FAVORITE RUST BUSTER.

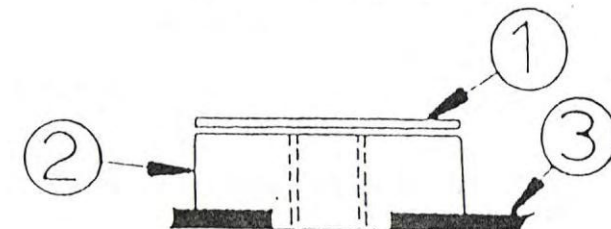
REMEMBER: ONLY RAISE BODY HIGH ENOUGH TO REMOVE & REPLACE MOUNTS. ALWAYS WATCH THE FAN SHROUD FOR SUFFICIENT CLEARANCE WHEN RAISING BODY. WHEN JACKING BODY USE A LONG ENOUGH 2X4-4X4 FOR MAXIMUM SUPPORT. NEVER PUT JACK DIRECTLY ON BODY PANELS.

NOTE: BE SURE ON DISASSEMBLY TO NOTE THE QUANTITY AND POSITIONS OF ANY SHIMS THAT MAY HAVE BEEN INSERTED FOR BODY ALIGNMENT. THESE SHIMS WILL HAVE TO BE RE-USED TO INSURE PROPER BODY ALIGNMENT.



INSTALL MOUNTS ONE SIDE AT A TIME WITH BOLTS ON OTHER SIDE LOOSENED ONLY.

PARTS DIAGRAM (REFER BELOW).



RETORQUE TO FACTORY SPECS.

POSITION #2

- 1- RECTANGULAR WASHER  
2-1/2 X 1-3/4
- 2- 4098
- 3- FRAME

POSITION #

3-4-5-6-7-8-9-10

- 1- 2" WASHER
- 2- 4101 x 18 pcs.
- 3- FRAME

POSITION #1

