

# Installation instructions

Set 3.4157 (All positions supplied)

73-75 Firebird with 1" I.D Core Support

© 2007 Energy Suspension. All rights reserved.  
May not be reproduced, in any form, or by any means,  
without the written consent of Energy Suspension.

**ENERGY**  
**SUSPENSION**

1131 VIA CALLEJON, SAN CLEMENTE, CA 92673

## Removal

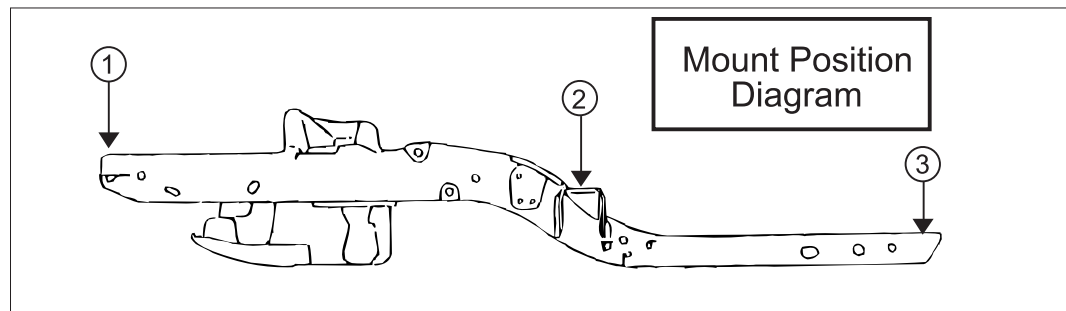
**Spray all nuts to be removed generously with your favorite rust buster.**

**Note:** When disassembling, note the quantity and positions of any shims that may have been inserted for body alignment. These shims will have to be reused to insure proper body alignment.

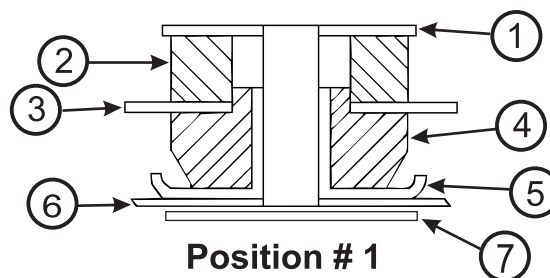
**Remember:** Only raise body high enough to remove & replace mounts. Always watch the fan shroud for sufficient clearance when raising the body. When jacking the body use a long enough 2X4 or 4X4 for maximum support. Never put jack directly on body panels.

Install mounts one side at a time with bolts on other side loosened only.

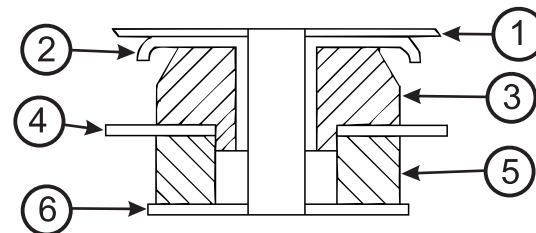
**Retorque to factory specs.**



**Parts Diagram**  
(refer below)



**Position # 1**



**Position # 2 & # 3**

**NOTE: POSITION # 1 ON 74-75 FIREBIRDS MAY REQUIRE EXTRA SHIMS OR SPACERS AND ARE NOT INCLUDED IN THIS KIT.**

## POSITION # 1

1. Supplied washer (2.00"O.D. x .7/16" I.D.)
2. 4213
3. Core support Bracket
4. 4212
5. Supplied metal insert (1.340"O.A.L.)
6. Frame
7. Supplied washer (2.00"O.D. x .7/16" I.D.)  
(used on 7/16" Bolt under frame)

NOT shown, but supplied for this position:  
2 - 7/16"-14 x 3.00" bolts grd5  
2 - 7/16"-14 locknuts.

## POSITION # 2

1. Body
2. Supplied metal insert (1.495"O.A.L.)
3. 4005
4. Frame
5. 4004
6. Supplied washer (2-1/2"O.D. x 5/8" I.D.)

NOT shown, but supplied for this position:  
2 - 5/8"-11 x 3" bolts grd5

## POSITION # 3

1. Body
2. Supplied metal insert (1.410"O.A.L.)
3. 4003
4. Frame
5. 4004
6. Supplied washer (2-1/2"O.D. x 5/8" I.D.)

NOT shown, but supplied for this position:  
2 - 5/8"-11 x 3" bolts grd5

17496

16/DEC/15 MAX EON 15131