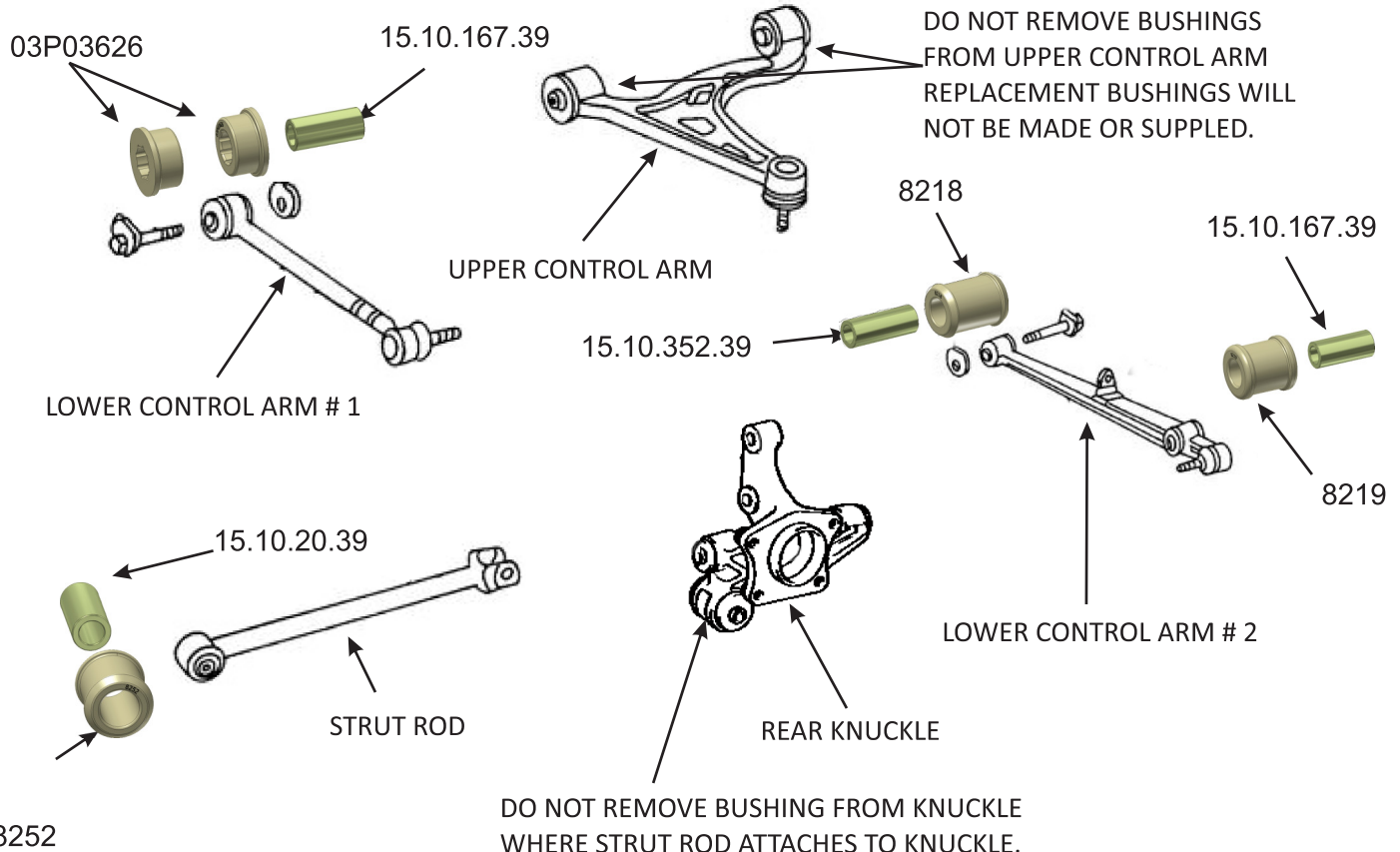


This instruction is intended as a guideline for the safe installation of Energy Suspension polyurethane bushings after original equipment has been removed from the vehicle. If you are unfamiliar with vehicle chassis and suspension repair work, it is recommended that you utilize a qualified service center for the replacement of these components. Reference vehicle manufacturer's service manual for component removal and replacement procedures and torque specifications. Before beginning work, read these instructions thoroughly and verify parts received match part numbers and quantities in parts list. In the case of discrepancy, contact Energy Suspension Customer Service (949-361-3935). Because wheel alignment is altered when suspension components are removed and replaced, it is highly recommended that your vehicle be checked and adjusted by a qualified alignment shop prior to use. Energy Suspension parts are designed to work with vehicles in good state of repair. We cannot be held responsible for suspension or steering related problems occurring due to poor vehicle maintenance.

## PARTS LIST

QTY:	P/N:	DESCRIPTION:
2	8218	NO. 2 LOWER CONTROL ARM BUSHING INNER POS.
2	8219	NO. 2 LOWER CONTROL ARM BUSHING STRUT POS.
2	8252	STRUT ROD BUSHING.
4	03P03626	NO. 1 LOWER CONTROL ARM BUSHING.
2	15.10.20.39	.875" X .563" X 1.800" SLEEVE.
4	15.10.167.39	.875" X .563" X 1.960" SLEEVE.
2	15.10.352.39	.875" X .563" X 2.335" SLEEVE.
1	17P17717	INSTRUCTIONS.



Be sure to place matchmarks on both sides on the No. 1 & No. 2 lower control arms adjusting cams before you start. You will need to use these matchmarks to reinstall the lower control arms back in the same position after the new polyurethane bushings are installed. **See Image 1.** Then have the vehicle's alignment checked by a certified technician. The alignment must be within factory specifications.



**Image 1**

### Lower control arm No. 1, No. 2 & strut rod bushing removal:

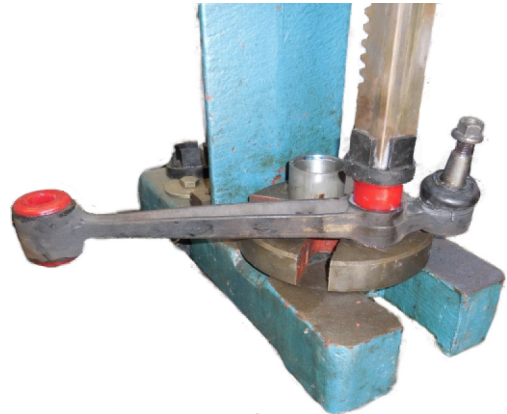
The old rubber bushings are bonded to the inner metal sleeve. The rubber bushing is not bonded to the inside diameter of the control arms or strut rod. Using a hydraulic press, properly support the control arm or strut rod with metal tubing which has an inside diameter big enough for the old rubber bushing to drop into. Use WD-40 around the flanges and slowly press down on the inner metal sleeve of the bushing to remove the rubber bushing. **See Image 2.** No. 2 lower control arm shone, No. 1 lower control arm and strut rod will press out the same way.



**Image 2**

### Bushing Instal:

Use diagram on page 1 for instal location of new polyurethane bushings and sleeves. Remove all sharp edges from inside diameter. Apply grease to all metal parts that will contact the new polyurethane bushings. Use an arbor press to install the new polyurethane bushings into the control arms and strut rod. **See Image 3.** No. 2 lower control arm shone, No. 1 lower control arm and strut rod will press in same way. Tighten all fasteners to factory specs. After installation is complete, Energy Suspension recommends an alignment be performed at a qualified alignment



**Image 3**

### Safety Warning and Liability Waiver

Installation of suspension lift kits (or devices) raises the center of gravity of a vehicle. This may create or increase the risk of vehicle instability and can result in vehicle rollover or other mishaps. Such incidents could lead to vehicle damage as well as injury or death to the vehicle driver, occupants and bystanders. Caution should be used when operating the vehicle by reducing speed and avoiding sharp turns and abrupt maneuvers. Driver and vehicle occupants should wear seat belts at all times. Do not add any parts or alter the Energy Suspension components to increase vehicle height over the intended height of the Energy Suspension lift set. Mixing component brands is not recommended. Consumer agrees to indemnify and hold Energy Suspension harmless for any and all injuries, damages or claims resulting directly or indirectly from the purchase, ownership, installation or use of Energy Suspension products.