

Installation Instructions

For set # 8.4113

Body Mount Set

1991-1997 Toyota Land Cruiser



1131 VIA CALLEJON, SAN CLEMENTE, CA 92673

© 2022 Energy Suspension. All rights reserved.
May not be reproduced, in any form, or by any means,
without the written consent of Energy Suspension.

It is recommended that if you are unfamiliar with this type of work that you refer to a qualified service center specializing in this type of work. It is also recommended that if you choose to do this work yourself that a factory service manual be obtained for the proper procedures pertaining to removal, replacement and proper torque specifications for your vehicle. This instruction set is intended as a guideline for the safe installation of Energy Suspension's polyurethane bushings, once you have removed the factory components from your vehicle. Wheel alignment is almost always disturbed when suspension components are removed or replaced. It is recommended that you have the alignment checked on your vehicle at a qualified alignment shop. Energy Suspension recommends that you read over all the installation instructions and check all P/N's and quantities in the parts list before you start. Call customer service at 949-361-3935 if the parts in your kit do not match this parts list. Prior to installation, make sure that your vehicle is in top mechanical condition and that there are no suspension or steering related problems. This part has been designed to work only with a vehicle that is in good state of repair. No matter how carefully we design our parts, this is one area we have no control over and cannot be held responsible.

Parts List for Body mount set: 8.4113

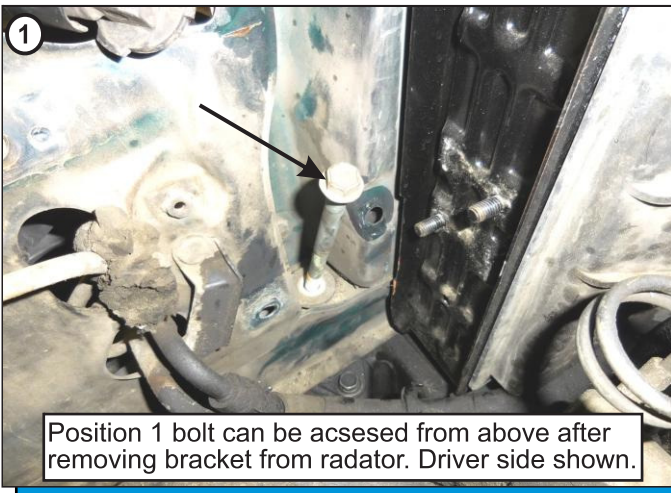
- 2 - 04P04424 Upper Body Mount POS. 6
- 2 - 04P04425 Lower Body Mount POS. 6
- 2 - 04P04426 Upper Body Mount POS. 2
- 2 - 04P04427 Lower Body Mount POS. 2
- 4 - 04P04428 Upper Body Mount POS. 3 & 4
- 4 - 04P04429 Lower Body Mount POS. 3 & 4
- 2 - 04P04430 Upper Body Mount POS. 5
- 2 - 04P04431 Upper Body Mount POS. 1
- 2 - 04P04432 Lower Body Mount POS. 1
- 2 - 04P04433 Upper Body Mount POS. 2
- 4 - 04P04434 Upper Body Mount POS. 3 & 4
- 10- 15.03.07.39 Washer, (2.5" x .406" x .110")
- 9 - 15.03.49.39 Washer, (2.25" x .500" x .132")
- 2 - 15.03.75.39 Square Washer, (1.5" Square x .406" x .250")
- 6 - 15.03.85.39 Washer, (1.375" x .437" x .172")
- 2 - 15.03.140.39 Washer, (.875" x .320" x .070")
- 12 - 15P0315139 Washer, (1.438" x .406" x .125")
- 8 - 15P0316340 Lock Washer, (18.1mm x 10.7mm x 2mm)
- 8 - 15P0316440 Washer, (20mm x 10.5mm x 2.2mm)
- 2 - 15.05.22.40 Bolt, (M8 x 1.5mm x 25mm)
- 8 - 15.05.47.40 Bolt, (M10 x 1.25mm x 25mm)
- 2 - 15P0513540 Bolt, (M10 x 1.5mm x 160mm)
- 2 - 15P0513640 Bolt, (M10 x 1.5mm x 110mm)
- 6 - 15P0513740 Bolt, (M10 x 1.5mm x 100mm)
- 10 - 15.07.17.40 Lock Nut, (M10 x 1.5mm)
- 2 - 15.08.22.39 Adapter Plate W/4.170" outside to outside
- 2 - 15P0815339 Adapter Plate W/4.390" outside to outside
- 2 - 15.10.171.39 Sleeve, (.750" x .480" x 2.900")
- 2 - 15.10.208.39 Sleeve, (.437" x .313" x .400")
- 2 - 15.10.211.39 Sleeve, (.750" x .500" x 2.600")
- 2 - 15.10.224.39 Sleeve, (.750" x .480" x 2.225")
- 4 - 15.10.312.39 Sleeve, (.688" x .500" x 2.480")
- 1 17P1727 Installation Instructions

Removal:

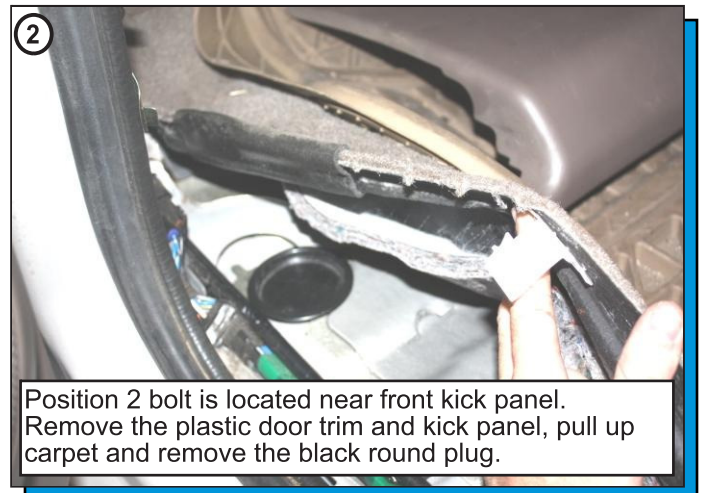
1. Toyota uses extra long bolts with double nuts in all positions. For easy removal, wire brush the threads and spray with WD-40. See the "Mount Position Diagram" on page 2 for general location of body mounts.
2. Loosen all body mounting bolts, but only remove one side at a time. Some mounts are accessed from the inside of the cab. The plastic molding will need to be removed and the carpet pulled back to access the black plastic caps covering the top of the body mount bolts. Remove bolts one side at a time with the bolts on the other side loosened only. (See Fig. 2 thru 4).

Important:

3. Only raise body high enough to remove & replace mounts. Always watch the fan shroud, brake lines, fuel lines, steering coupler and body panels around the bumpers for sufficient clearance when raising the body. When jacking the body use as long as possible 2X4 or 4X4 wood blocks in 2 places for maximum support. Never put jack pad directly on body panels. Be sure to shut all the doors when lifting the body.
4. Install the new upper body mounts and upper washers into positions 2, 3 & 4. For positions 1 and 6, install the adapter plates on top of frame perch using supplied washers, lock washers and bolts. Position 5 is under vehicle above differential and will need a long extension and socket up through the frame cross member to the mounting bolt. Lower the body until it starts to touch the new washers, open the doors and install the supplied bolts. Lower the body all the way and install the new lower mounts, washers and nuts. Position 2 passenger side must reuse the factory lower washer/heat shield. Keep the nuts loose until both sides are completely installed. Repeat on other side. (See Fig. 6 thru 10 for assembly sequence)
5. Torque all nuts & bolts to factory specs. Reinstall the black plastic plugs, carpet and plastic panels.



Position 1 bolt can be accessed from above after removing bracket from radiator. Driver side shown.



Position 2 bolt is located near front kick panel. Remove the plastic door trim and kick panel, pull up carpet and remove the black round plug.

Installation Instructions

For set # 8.4113

Body Mount Set

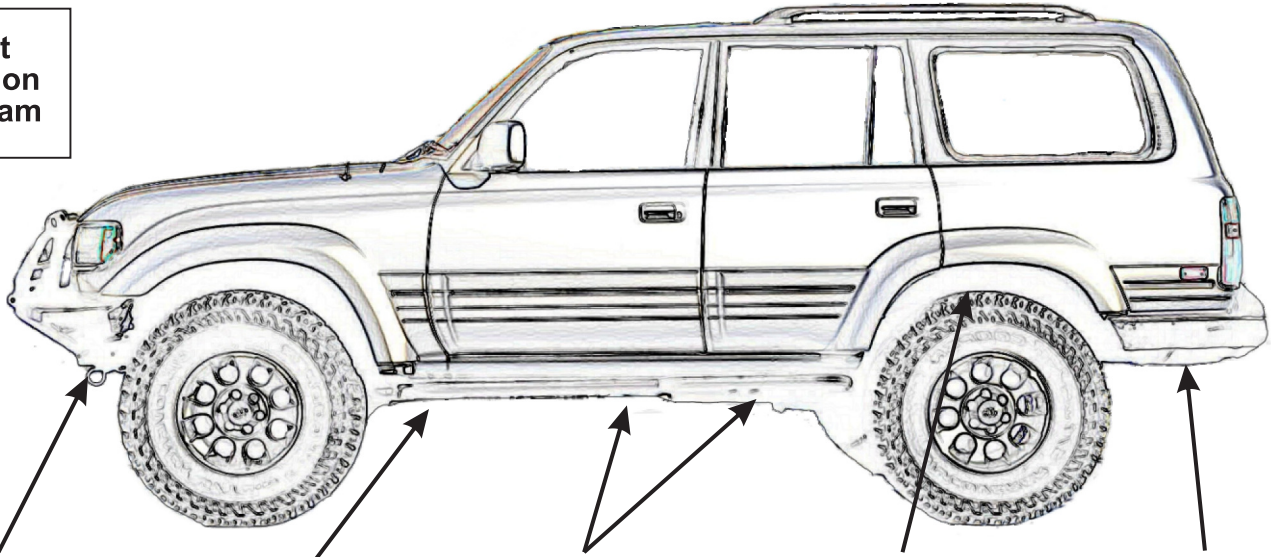
1991-1997 Toyota Land Cruiser



1131 VIA CALLEJON, SAN CLEMENTE, CA 92673

© 2022 Energy Suspension. All rights reserved.
May not be reproduced, in any form, or by any means,
without the written consent of Energy Suspension.

Mount Position Diagram



Position 1

Position 2

Position 3 & 4

Position 5

Position 6



Position 3 bolt is located under the front seat next to the rear mounting point. Remove the 4 mounting bolts and lift the seat up and pull up carpet and remove the black round plug. Black round plug already removed.



Position 4 bolt is located below the rear seat. Remove the plastic trim and panels, pull up carpet and remove the black round plug.

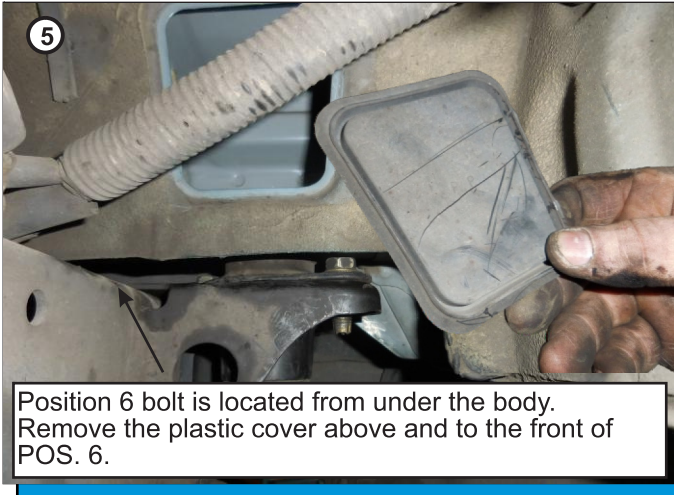
Installation Instructions

For set # 8.4113

Body Mount Set

1991-1997 Toyota Land Cruiser

© 2022 Energy Suspension. All rights reserved.
May not be reproduced, in any form, or by any means,
without the written consent of Energy Suspension.



NOTE: Position 2 passenger side only, washer 15.03.49.39 is not supplied must reuse the factory lower washer/heat shield.

